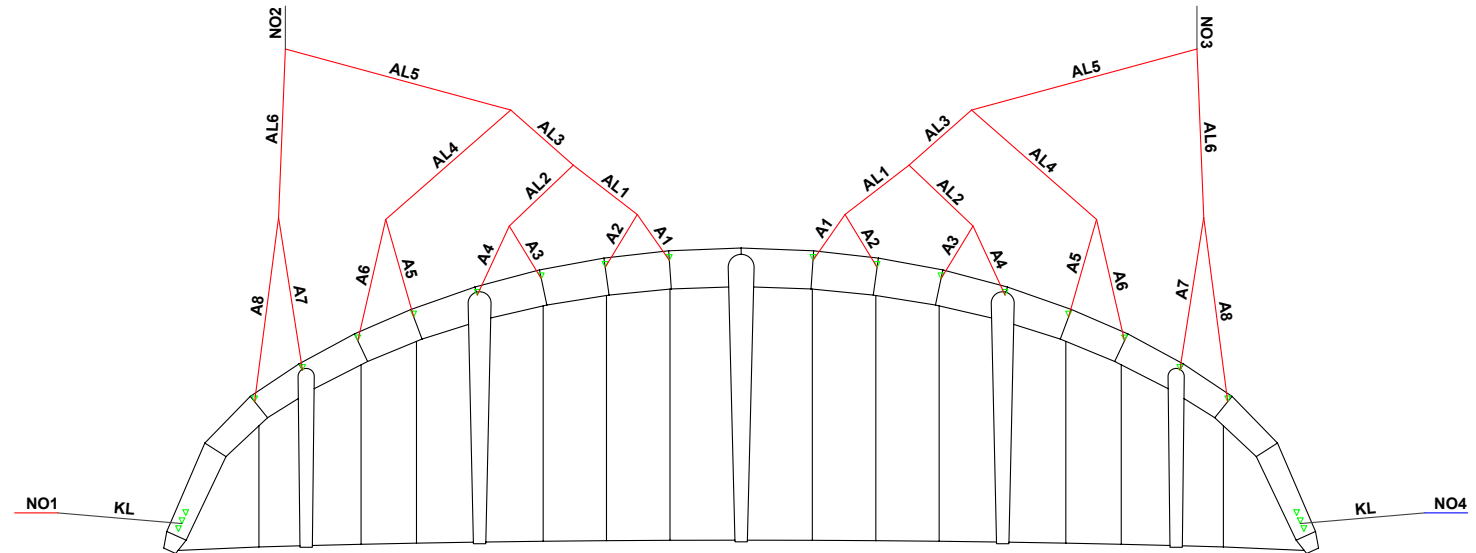


## EDGE VT RIGGING DIAGRAM

BRIDLE LINES SHOULD BE REGULARLY CHECKED AND MAINTAINED IN THE CORRECT TRIM OR THE KITE WILL NOT PERFORM AS DESIGNED. IF THEY ARE WORN OR NOT TO FACTORY SPECIFICATION (+ OR - 20MM) THEY SHOULD BE REPLACED. REPLACEMENTS CAN BE ORDERED INDIVIDUALLY OR AS A FULL SET FROM YOUR SHOP/DEALER.



1. Open the kite out in a large space.
2. Inspect all bridle lines for wear/damage. Take note or label lines to be replaced.
3. Use a tape measure to measure the remaining bridles. Ask a friend to hold the end of the tape measure and bridle line in position to get an accurate measurement.
4. Pull on the line to add some tension and note each measurement.
5. Refer to the bridle line measurements sheet and rigging diagrams. Take note or label lines to be replaced.
6. Replace all bridle lines as necessary.

### BRIDLE CHECK SHEET. ALL MEASUREMENTS IN MM

	7m	8m	9m	10m	11m	12m	13m	15m	18m
<b>A1</b>	550	590	615	650	640	670	690	750	830
<b>A2</b>	330	350	370	390	370	390	400	430	480
<b>A3</b>	420	450	475	500	530	560	570	620	680
<b>A4</b>	250	270	280	300	320	330	340	370	410
<b>A5</b>	440	470	490	520	550	570	590	640	700
<b>A6</b>	280	300	320	340	360	380	390	420	470
<b>A7</b>	490	520	550	580	610	630	660	710	780
<b>A8</b>	360	380	400	420	450	470	480	520	570
<b>AL1</b>	660	700	735	770	870	910	940	1000	1110
<b>AL2</b>	290	310	330	350	370	390	400	430	470
<b>AL3</b>	570	609	640	680	720	730	770	820	910
<b>AL4</b>	390	420	435	460	490	500	520	560	620
<b>AL5</b>	920	980	1035	1090	1160	1190	1240	1330	1470
<b>AL6</b>	820	880	925	980	1030	1070	1120	1200	1330
<b>KL</b>	590	630	670	710	740	760	800	860	950